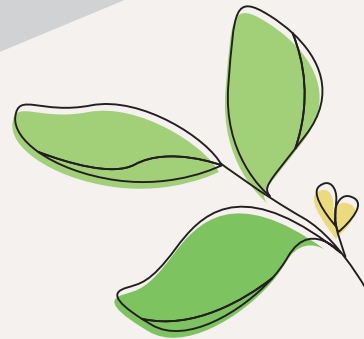
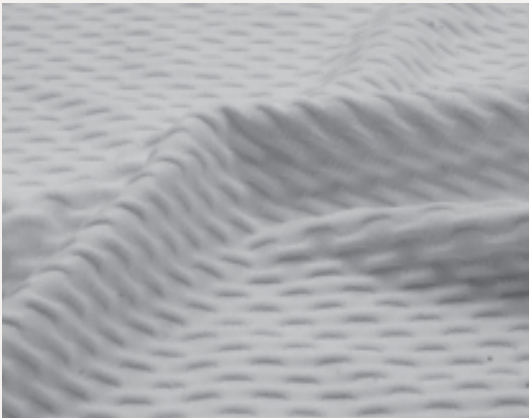


The continuous challenges of epidemic have changed our lives.....





We cannot resist the destiny that live every day with anxiety.



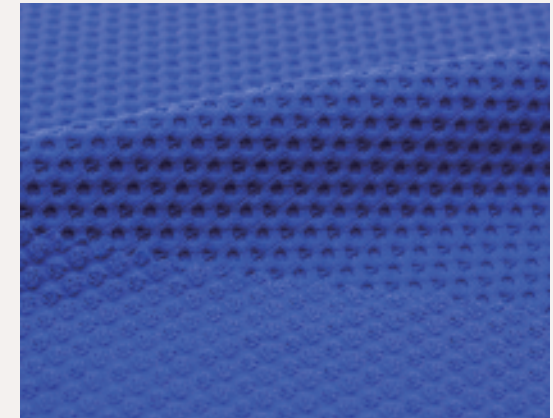
N/S5M1336

93% Nylon + 7% Spandex
Weight :213g/m² Width inch: 55" cut



5S3676



85% Nylon + 15% Spandex
Weight :217g/m² Width inch: 62" cut



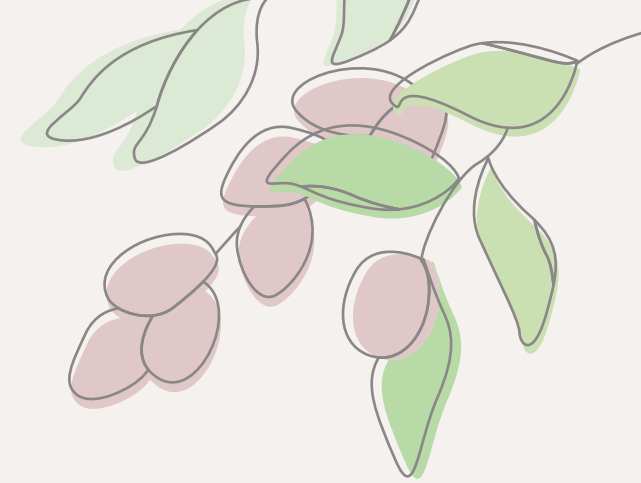
5S3675

85% Nylon + 15% Spandex
Weight :210g/m² Width inch: 63" cut

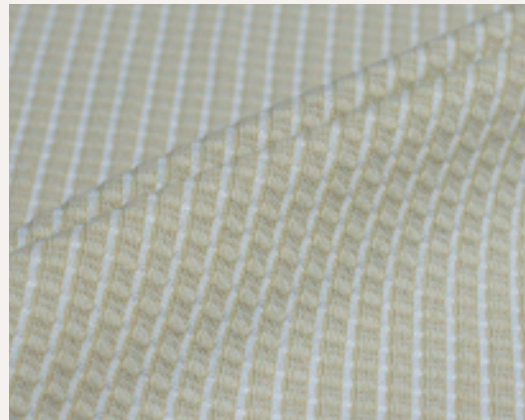
The fabric designed with embossed textures which presenting it is rough as life. The space between the fabric and our skin with the effect of breathable and comfortable makes the general fabric more richness and diversity.



Bacterial is all around in our lives, it becomes necessary that people using things with anti-bacterial function.

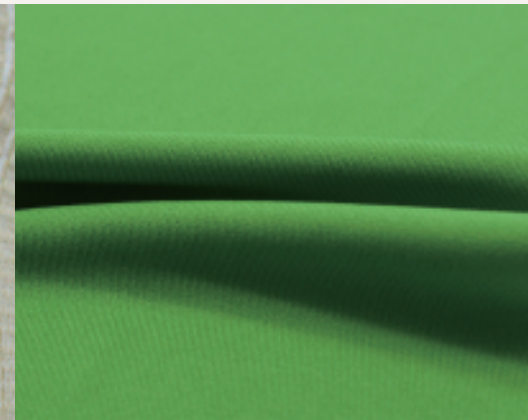


Knitting the fabric with anti-bacterial yarn will keep its effective longer than adding chemicals. And it actually has more competitiveness than other materials without this function!



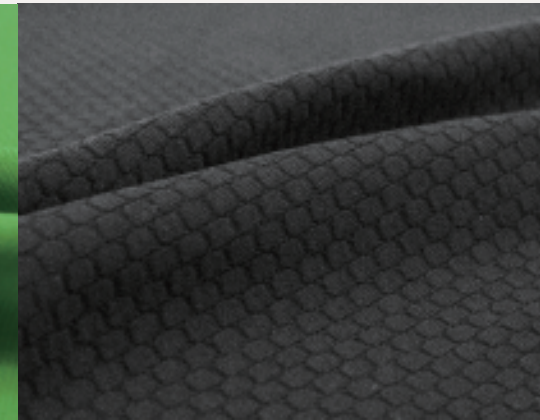
T5M1139

67% Polyester + 33% CuX Polyester
Weight : 167 g/m² Width inch: 59" cut



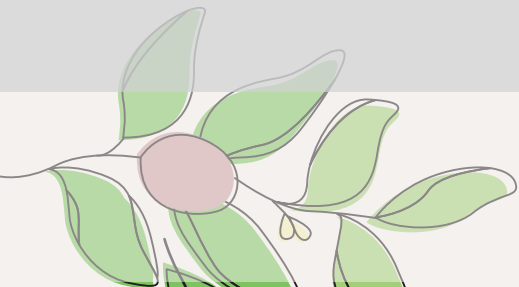
T5M1339

100% Polyester
Weight : 144 g/m² Width inch: 64" cut

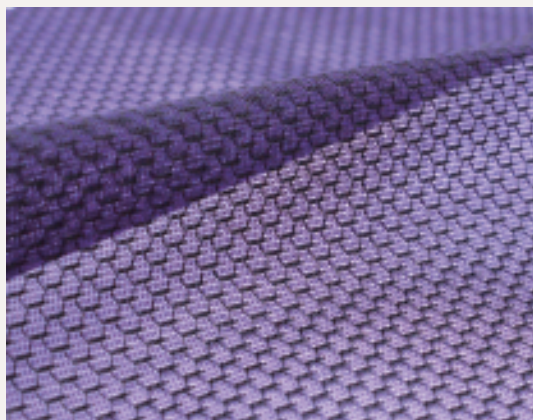


T5S3313

73% Polyester + 9% XT2 + 18% Spandex
Weight :158g/m² Width inch: 55" cut



*Self-protection is how the people do now and days...
The effect of transparent could achieve a state of isolation.*



T5L4269

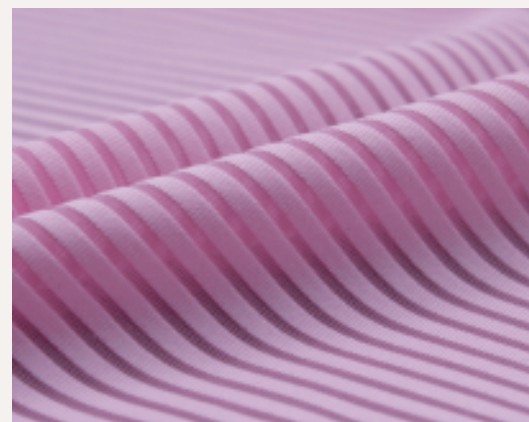
100% Polyester
Weight:158 g/m²
Width inch:52"cut



T/CD5L4219

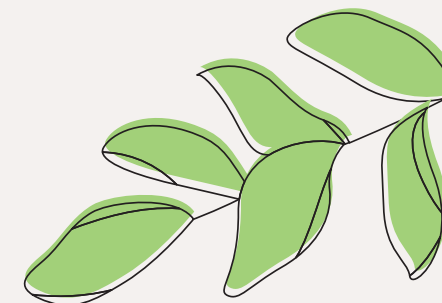
9% CD Polyester + 91% Polyester
Weight:204 g/m²
Width inch:55"cut

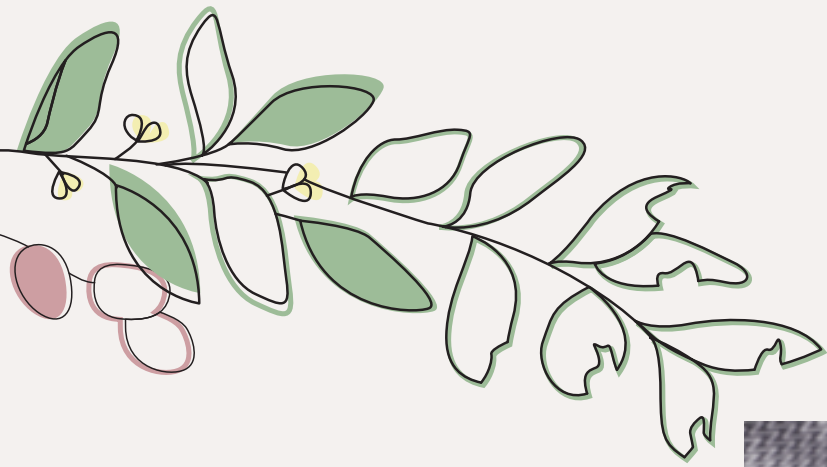
Within this special weaving method shows the transparent effect which had a sense of mystery when the fabric is applied to the finished product.



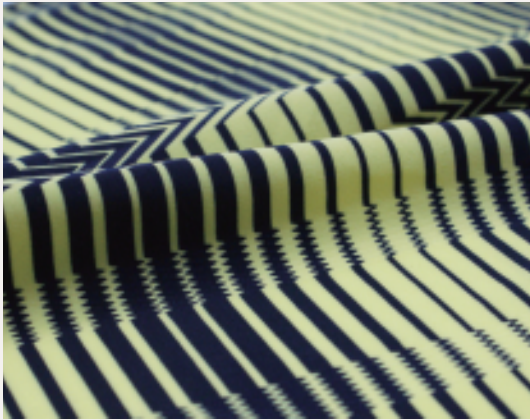
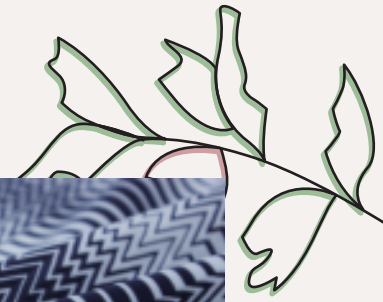
T/S5M1265

80% Polyester + 20% Spandex
Weight:223 g/m²
Width inch:53"cut



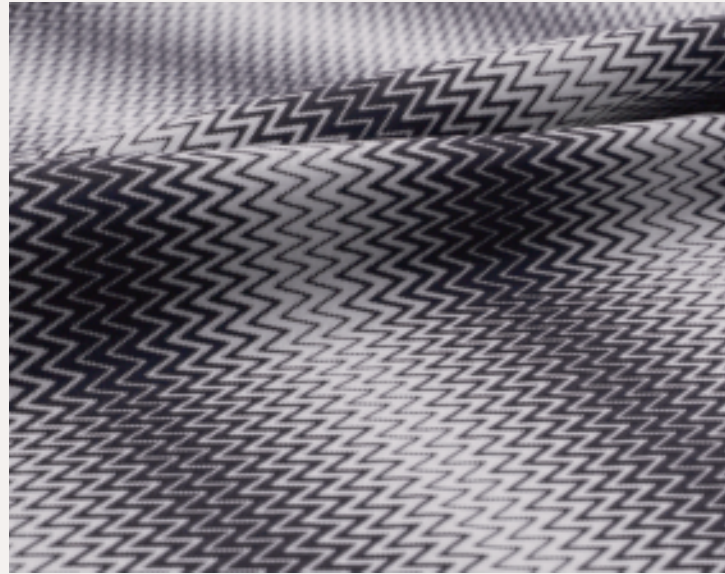


All the damages and changes in the world are indelible ...



T/CD5S3726

46% CD Polyester+28% Polyester+26%Spandex
Weight : 192 g/m² Width inch:47" cut



T/CD5S3689

45% CD Polyester +28% Polyester+27%Spandex
Weight : 153 g/m² Width inch:58" cut



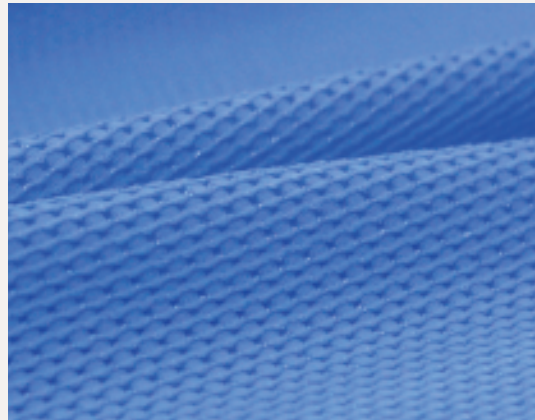
T/CD5S3727

47% CD Polyester +28% Polyester+25%Spandex
Weight : 195 g/m² Width inch:45" cut

Even within these simple patterns, the gradient color changing have a strong visual attraction and could perform itself outstanding .



As we expect that we could find the peace in our lives, all the things left in this unstable world will getting better.



T5S3690

81% Polyester + 19% Spandex
Weight : 190 g/m²
Width inch:62" cut



5S3663

92% Nylon + 8% Spandex
Weight : 236 g/m²
Width inch:48" cut



T5S3677

97% Polyester + 3% Spandex
Weight : 306 g/m²
Width inch: 46" cut

By using different property of yarn to show the flicker effect, it makes the fabric more various and richness at the same time.

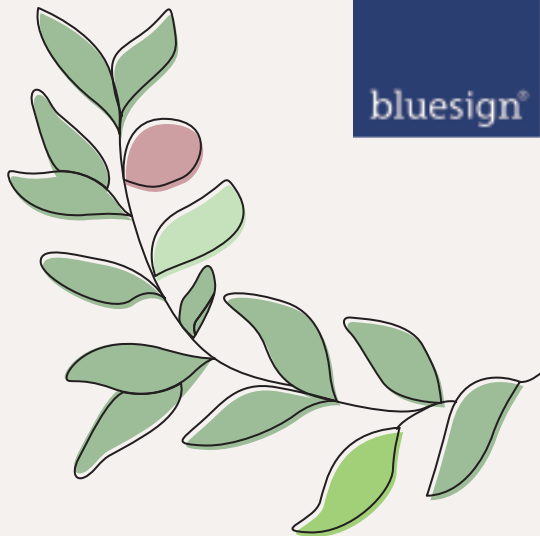
WU LUEN KNITTING CO., LTD.

No.859, Sec.3, Zhangshui Rd., Pitou,Changhua 52341, Taiwan

Tel :+886-4-892-7399

Fax :+886-4-892-7327

Mail: leo.wu@wu-luen.com.tw



www.wu-luen.com